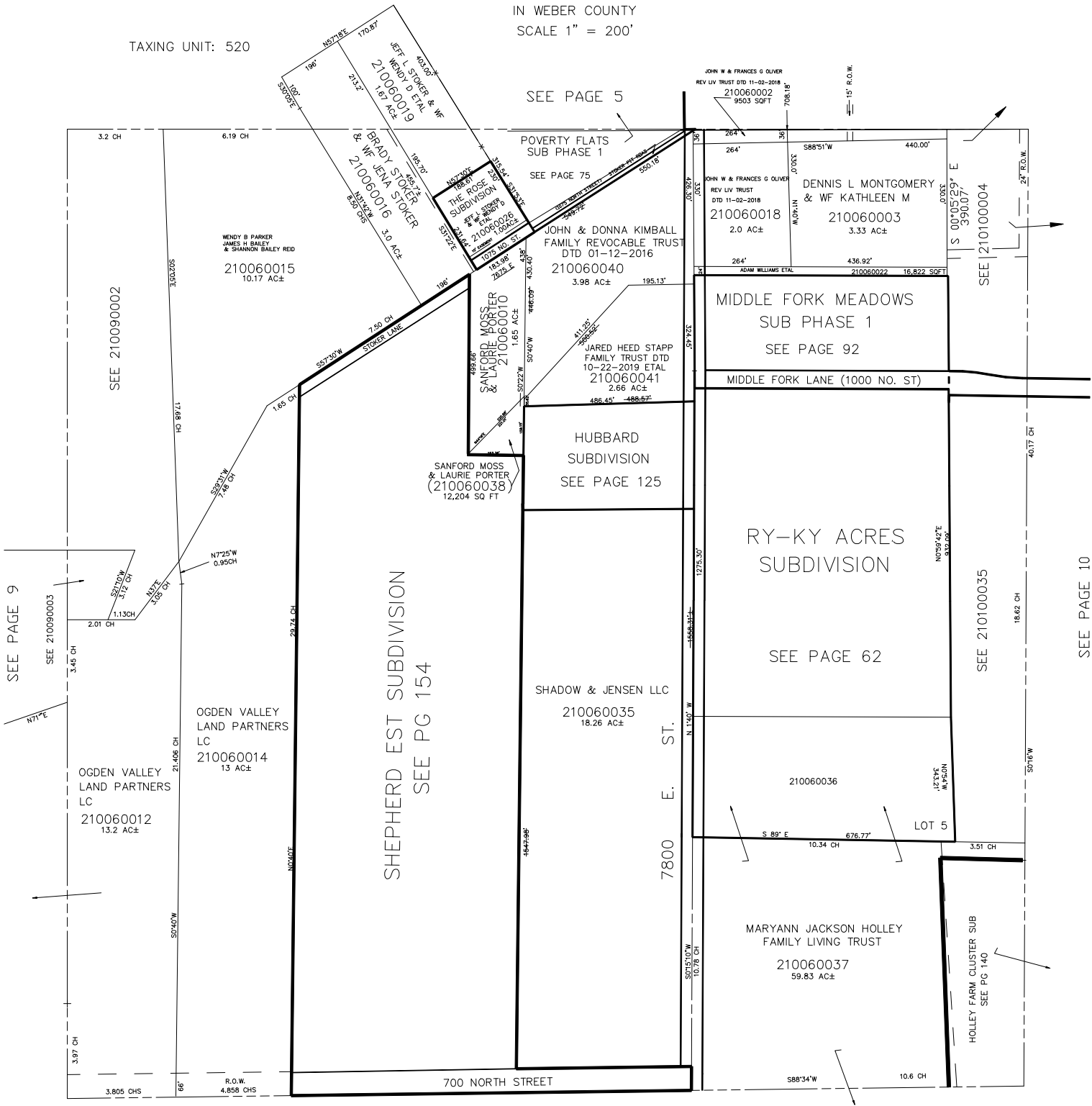


NE 1/4  
SECTION 7, T.6N., R.2E., S.L.B. & M.  
IN WEBER COUNTY  
SCALE 1" = 200'

TAXING UNIT: 520



SEE PAGE 7

SEE PAGE 9

SEE PAGE 5

SEE PAGE 75

SHEPHERD EST SUBDIVISION  
SEE PG 154

HUBBARD  
SUBDIVISION  
SEE PAGE 125

MIDDLE FORK MEADOWS  
SUB PHASE 1  
SEE PAGE 92

RY-KY ACRES  
SUBDIVISION  
SEE PAGE 62

SEE PAGE 10